

STREAM TEARDROP



Surface - mounted power LED
High efficiency cleanroom lighting
Laminar flow
Energy efficiency
Easy installation
Longevity

BUCK GmbH

Hietzinger Kai 67-69, 1130 Vienna
Office address: Fleischmarkt 1 | 6th floor |
1010 Vienna | Austria
office@bucklicht.at
www.bucklicht.at
Copyright © 2024 BUCK, edition 2

BUCK
www.buck.lighting

STREAM TEARDROP

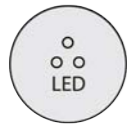
Surface-mounted linear LED luminaire designed for general illumination in clean & dry areas with laminar airflow.

The STREAM TEARDROP luminaire embodies circular economy principles with its replaceable electronic unit, reducing the need for total fixture replacements. Plus, it offers an exceptional 50,000-hour operational life (L80B10), ensuring long-lasting performance. Furthermore, its strict adherence to the SDCM 3 colour accuracy standard guarantees consistent, high-quality lighting.

Lighting applications:

Micro-electronics industry

Automotive industry - battery production



Lamp type



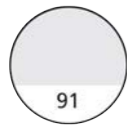
Mounting on normally flammable surfaces



Ceiling mounted



Electrical safety



Anodization in natural aluminium colour



Voltage



Class 1 according to classification 14644



Frequency



CE marking



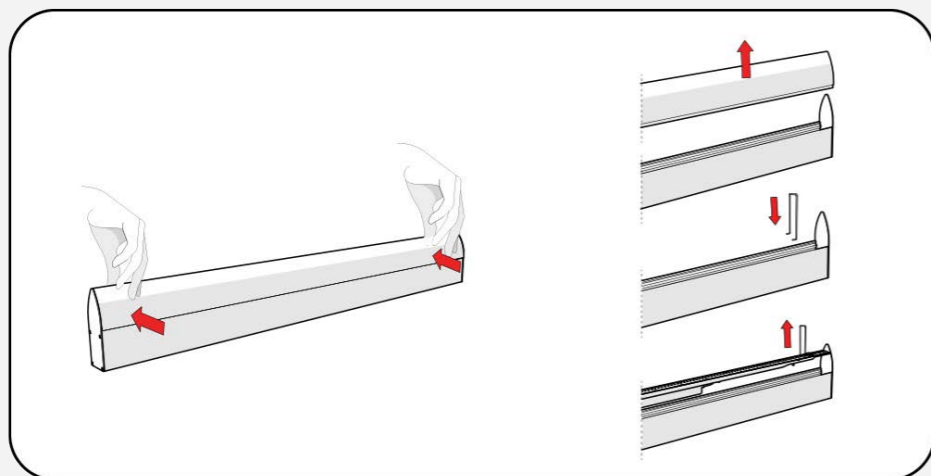
Ingress protection



OPTICAL EQUIPMENT

Opal PMMA diffuser in specific aerodynamic form, linear ribs inside for visual comfort and a smooth outer surface for easy cleaning.

Tool-free removable diffuser without removing end caps.



HOUSING

Luminaire of extruded aluminum.
Finish anodization in natural aluminum colour. Other finishes available on request.

LED modules

White light: zhaga LED module, energy efficiency up to 203 lm/W, rated AA+.
The electronic unit is completely replaceable.
Emergency lighting and DALI dimmable upon request

CONTAMINATION CONTROL

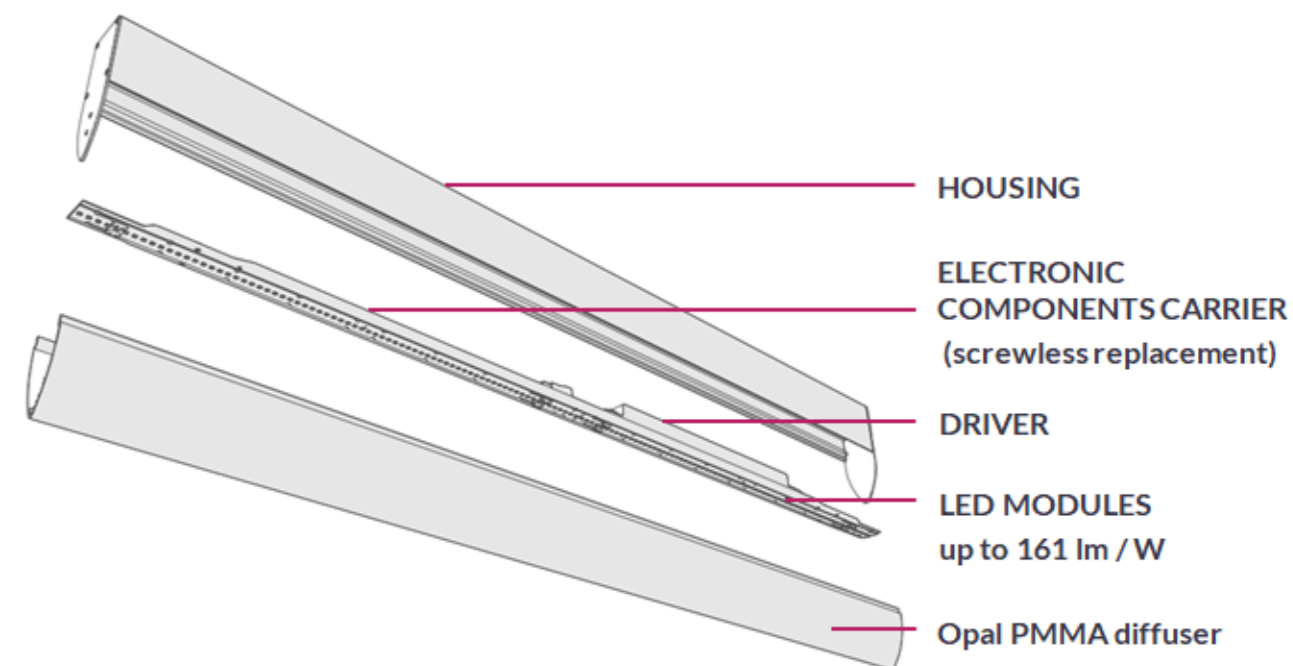
Air cleanness class 1 in compliance with ISO 14644-14.

INSTALLATION

The STREAM TEARDROP luminaire can be installed on all kinds of rigid ceilings by

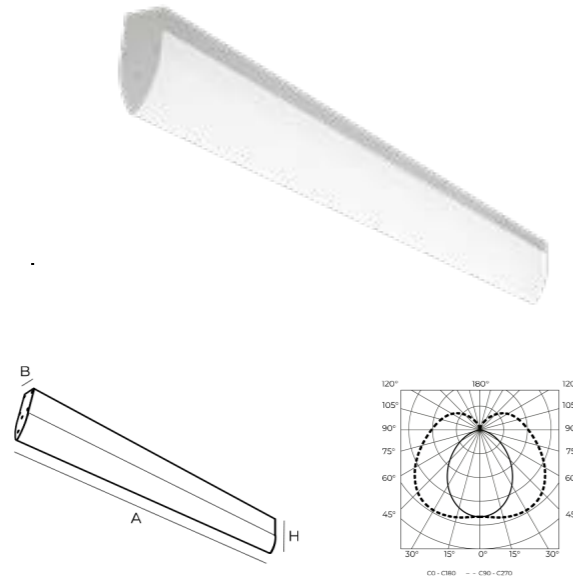
1. Direct screwing – type A
2. External clamping on T55 ceilings – type B

DESIGN OVERVIEW



* DIFFERENT END CAPS FOR IP54 UPON REQUEST

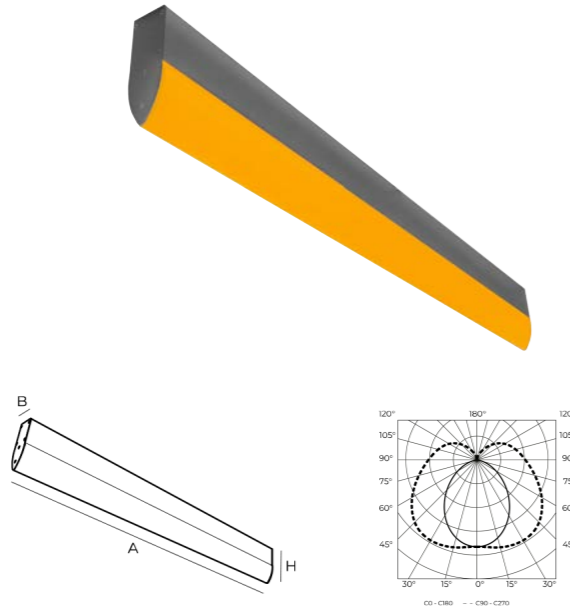
STREAM TEARDROP



Dimensions A/B/H	1140x46x140mm
Ingress protection rating	IP54
Finish	anodization in natural aluminium colour
Weight	2.70kg
Luminaire luminous flux (t_a=25°)	4030/7330lm
Total power	25/51W
Luminaire efficiency	161/144lm/W
Light colour temperature	4000K
CRI	>80
LED service life	72.000h(L80B10) SDCM 3
Power supply	220-240V, 50-60Hz
Control gear	ECG, DALI



STREAM TEARDROP LSL 620nm



Dimensions A/B/H	1140x46x140mm
Ingress protection rating	IP54
Finish	anodization in natural aluminium colour
Weight	2.70kg
Luminaire luminous flux (t_a=25°)	2600lm
Total power	30W
Luminaire efficiency	87lm/W
Light colour temperature	4000K
LED service life	50.000h(L80B10) SDCM 3
Power supply	220-240V, 50-60Hz
Control gear	ECG, DALI



OPTICS Multilayer optics, consisting of: highly transparent tempered glass protector, diffuser of microprismatic structure (for glare limitation and diffused light) and opal foil (for a uniformly illuminated surface, without visible light sources).

APPLICATION Micro-electronics industry, automotive battery production

SUGGESTED AREAS Clean & dry areas with laminar airflow. Micro-electronics industry, automotive battery production